

# Calvin Connection



**Note:**

Page 2 - Pastor Carol's  
Corner

Page 5 - March FoodShare  
information

Page 7 - March church  
calendar



## Inside this issue:

<b>Pastor's Corner</b>	<b>2</b>
<b>Worship</b>	<b>3</b>
<b>Youth</b>	<b>4</b>
<b>Education</b>	<b>4</b>
<b>Serve</b>	<b>5</b>
<b>Care</b>	<b>5</b>
<b>Connect</b>	<b>6</b>
<b>Music</b>	<b>6</b>
<b>Calendar</b>	<b>7</b>



## HOLY WEEK WORSHIP SCHEDULE

**March 2018**

**Palm Sunday, March 25** - Worship service at 10:00am with special music, and dedication of our One Great Hour of Sharing offerings. Egg bake brunch to follow after worship service. Sign up in the Gathering Hall.

**Maundy Thursday, March 29** - We will gather for worship, with communion at 7:00pm in the sanctuary (no Wednesday evening soup supper during Holy Week).

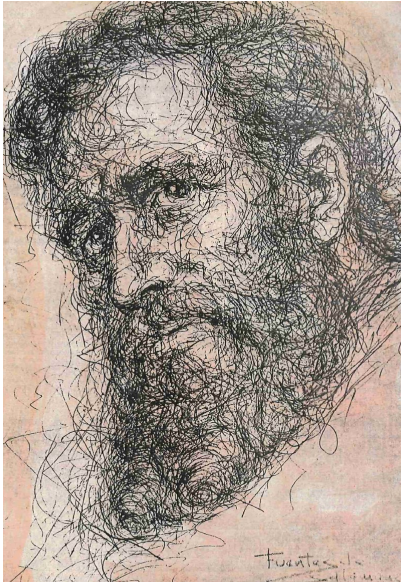
**Good Friday, March 30** - We are hosting a worship service in the sanctuary at 7:00pm. First Presbyterian Church of Maple Plain will join us.

### *Daily Scripture Readings From the Office of Theology and Worship, PC (USA)*

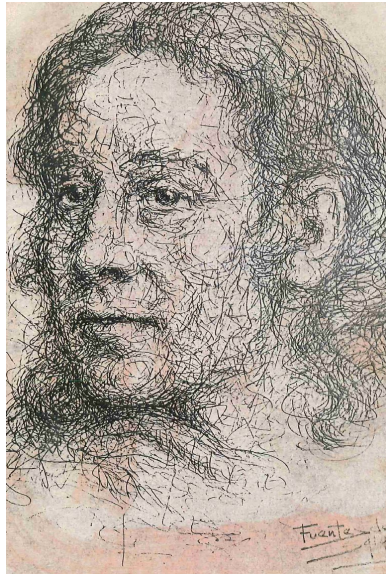
Thursday, March 1 - Mark 4:1-20	Friday, March 16 - Mark 9:2-13
Friday, March 2 - Mark 4:21-34	Saturday, March 17 - Mark 9:14-29
Saturday, March 3 - Mark 4:35-41	Sunday, March 18 - John 8:46-59
Sunday, March 4 - Mark 5:1-20	Monday, March 19 - Mark 9:30-41
Monday, March 5 - Mark 5:21-43	Tuesday, March 20 - Mark 9:42-50
Tuesday, March 6 - Mark 6:1-13	Wednesday, March 21 - Mark 10:1-16
Wednesday, March 7 - Mark 6:13-29	Thursday, March 22 - Mark 10:17-31
Thursday, March 8 - Mark 6:30-46	Friday, March 23 - Mark 10:32-45
Friday, March 9 - Mark 6:47-56	Saturday, March 24 - Mark 10:46-52
Saturday, March 10 - Mark 7:1-23	Palm Sunday, March 25 - Luke 19:41-48
Sunday, March 11 - John 6:27-40	Monday, March 26 - Mark 11:12-25
Monday, March 12 - Mark 7:24-37	Tuesday, March 27 - Mark 11:27-33
Tuesday, March 13 - Mark 8:1-10	Wednesday, March 28 - Mark 12:1-11
Wednesday, March 14 - Mark 8:11-26	Maundy Thurs, March 29 - Mark 14:12-25
Thursday, March 15 - Mark 8:27-9:1	Good Friday, March 30 - John 19:16-30

## Pastor Carol's Corner

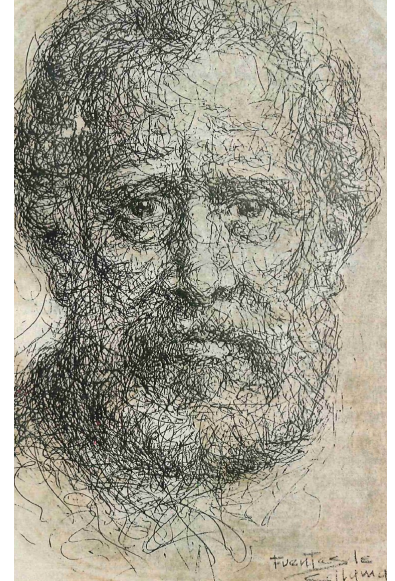
This year our Lenten mid-week series has been written by Rev. Dwight Chamberlain. Like previous years, our own church members are providing the dramatic presentations. Each week we are examining the life of one of the disciples as portrayed in Leonardo da Vinci's painting, The Last Supper. In the process we are considering what it means for us to live as a disciple of Jesus Christ.



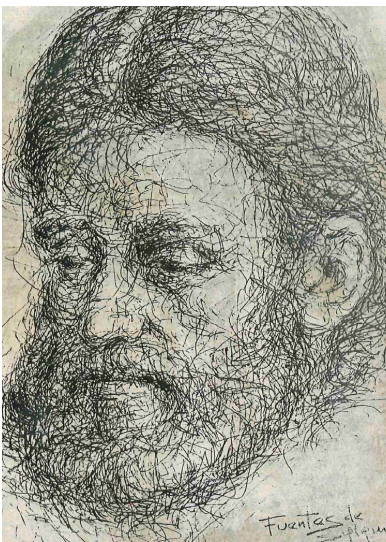
**Bartholomew**



**Andrew**



**James**



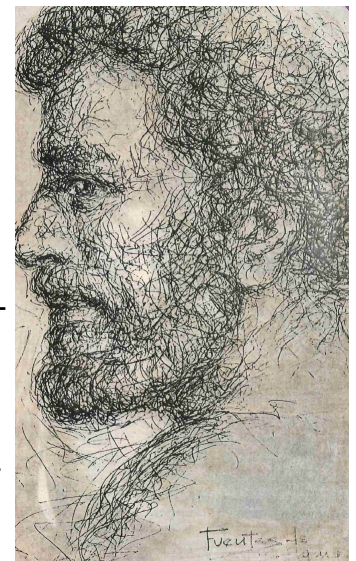
**Philip**

### **Artist: Jose Fuentes de Salamanca (b.1934)**

He was born February 20, 1934 in the village of Salamanca, Spain.

In 1946, at age twelve, he was admitted into the Escuela de Artes y Oficios where he studied drawing, art history and sciences. In 1952 he entered the Real Academia de Bellas Arts of San Fernando in Madrid.

Versatile in every medium from ink to oil, Fuentes concentrated on the human form early in his career and became known for his portrayals of biblical characters.



**Thomas**



## Greeter/Liturgist Schedule

### March 4 - Communion

Greeters - The Goman Family  
Liturgist - Anita Goman

### March 11

Greeter - George Funk  
Liturgist - Judy Rogosheske

### March 18

Greeters - The Shaughnessy Family  
Liturgist - Maighread Shaughnessy

### March 25

Greeter - Joel & Sarah Settles  
Liturgist - Joel Settles

## Soup Suppers continue through Wednesday, March 21st!

Time: Lenten meal served at 6:00pm,

Worship service at 6:30pm

Where: Calvin Fellowship Hall

Free will offering will be collected



Sign-up sheets to bring soup or to  
volunteer for set-up/clean-up are  
in the Gathering Hall

## Winter Schedule

9:00am Adult Education, Fellowship Hall

9:30am Chancel choir practice, Choir Rehearsal Room

10:00am Worship

10:00am Sunday school (for the 1st Sunday of the  
month), all other Sundays the children will be in  
worship until the children's message

11:00am Coffee Fellowship in Fellowship Hall

### Weekly Activities

#### Sunday

9:00am Adult Education  
9:30am Chancel choir rehearsal  
10:00am Worship/Sunday school  
11:00am Fellowship time

#### Tuesday

3:00pm SPARKS program

#### Wednesday

6:00pm Handbell practice  
7:00pm Chancel choir practice

#### Thursday

3:00pm SPARKS program

### Monthly Activities

Men's Breakfast	1st Monday	8:00am
Session Meeting	1st Tuesday	6:30pm
Lunch Bunch	1st Wednesday	12:00pm
PW Meeting	3rd Monday	9:00am
Ruth Circle	2nd Thursday	2:00pm
Mary & Martha Circle	4th Wednesday	9:30am

## Palm Sunday Brunch

We will be serving a great brunch in the Fellowship Hall on Palm Sunday, March 25th after worship. Dobo's is catering the meal of egg bakes, caramel rolls, and fresh fruit. Orange juice and coffee will be provided by church. All are welcome so feel free to invite your neighbors and friends! A free will offering will be collected. Please sign up in the Gathering Hall.

## *In Memoriam*



*I am the resurrection and the life. Those who believe in me,  
even though they die, will live, and everyone who lives and be-  
lieves in me will never die.*  
~John 11:25-26

**Shirley Tulberg**

**February 2, 1938-January 16, 2018**

**Darwin Swanson**

**December 7, 1928-February 3, 2018**



Hazel Carver's baptism at Calvin Church on Sunday, January 28th. Pictured from left to right: Billy Woodside, Lily & Hazel Carver, and Heather & Jamie Carver

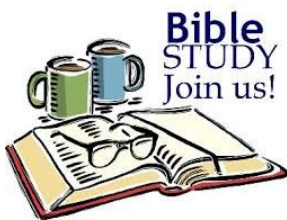
### ON THE ROAD TO EASTER WORD SEARCH



Ash	Holy Week	Palm Branch
Wednesday	Holy Thursday	Forty Days
Sacrifice	Good Friday	Jesus
Almsgiving	Holy Saturday	Passover
Prayer	Easter	Foot Washing
Fasting	Palm Sunday	Resurrection
Lent	Purple	Love



© 2014 - ManyLittleBlessings.com | CatholicPrintablesOnline.com



## ADULT EDUCATION

Fellowship Hall - 9:00am  
Everyone is welcome!



A Bible Study Series on the theme  
**ACKNOWLEDGING GOD**  
Unit One: Follow in My Ways

Led by Rev. Dwight Chamberlain and Rev. Dr. Carol Reed

Sunday, March 4 - Lesson 1, The Lord Will Provide -- Genesis 22:1-14  
 Sunday, March 11 - Lesson 2, A Prayer of Dedication -- II Chronicles 6:12-21  
 Sunday, March 18 - Lesson 3, Worshipping in God's Temple -- II Chronicles 7:1-9  
 Sunday, March 25 - Lesson 4, Seeking His Face -- II Chronicles 7:12-22



**Trinity Lutheran Church is hosting their 5th Mobile Pack event for Feed My Starving Children on April 13-15.** This year their goal is to pack 450,000 meals - enough to feed over 1200 children for an entire year! Volunteer sign-up on Trinity's website begins March 2nd. Or if you're interested in further supporting this great cause but can't attend the event, please make checks payable to Calvin Presbyterian Church (with FMSC in the memo line), and all donations will be sent to Trinity for the Mobile Pack event.



Calvin is participating in **Pack the Pews** for the MN FoodShare March Campaign. Please see the list of most needed items on this page, and bring in donations to "pack the pews"! If you don't wish to shop but would still like to participate, checks can be made out to Calvin Church with MN FoodShare in the memo line.



## Birthdays



*Celebrate!*

March 5

Bob Solheim  
Bette Chamberlain  
Grace Berbig

March 13

Evelyn Neilson  
Dave Shaughnessy

March 14

Susan Manro

March 15

Laura Rettinger

March 21

Margot Garin

March 25

Dave Kearin

March 28

Tammy Wenz

## FILL A BAG

### FOR OUR LOCAL FOOD SHELF

Respond to food insecurity in our community by filling a grocery bag with much needed food and household items for our local food shelf.

Often needed items:

- Proteins - canned meats, fish, and beans, nuts & nut butters
- Fresh/dried herbs & spices
- White, wild, & brown rice varieties
- Gluten-free flours & flour blends (Ex. Coconut, oat, rice, almond, tapioca, chickpea, sorghum, cassava, amaranth, buckwheat, teff)
- Personal care items - shampoo/soap, deodorant, toothpaste, feminine hygiene, diapers, toilet paper
- Household supplies - laundry & dish detergent, kitchen & bathroom cleaners, paper towels



**Thursday, March 22, 2018**

**5:30-6:30pm**

**St. George Catholic Church**

ALL ARE WELCOME - Bring the kids! There is no cost for these meals, but donations will be accepted. Join us!

## PRESBYTERIAN WOMEN

**Ruth Circle** Meeting March 8th @ 2pm

**PW** No March meeting

**Mary & Martha Circle** Meeting March 28th @ 9:30am







**No Lunch Bunch is scheduled for March**, due to our weekly Lenten soup suppers. April's Lunch Bunch will be Wednesday, April 4th and is currently open for hosting; please sign up for hosting on the sign-up sheet in the Gathering Hall. Bring a dish to share, **but no need to bring your own place settings**. We use kitchen supplies from church to simplify clean-up afterwards. We now rotate host responsibilities every month.



**Thank you to Pastors Carol and Dwight and our Calvin family** for your prayers, visits, and cards during Darwin's illness and death. Thank you too for all your support and help with the memorial service. ~Blessings to all, Harriet and family



**Easter flowers** - We will have a variety of flowering plants in the chancel on Easter Sunday to represent the garden tomb. To order flowers please fill out an order form and return it with payment to the church office, no later than Wednesday, March 21st. Order forms are available in the Gathering Hall.




---

---

*Pictured at left: Wanda and Ken Pratt posing with their hand-crafted Ojibway style snowshoes made at a class they attended at Tettegouche State Park in Silver Bay, MN.*

---

---



The music department is very busy during Lent! There's no better time to join the choir than this time in the church calendar -enjoy soup and worship on Wednesday evenings and stay for choir rehearsal directly after! After the passing of Shirley Tulberg - an active member of our music program - I have decided to launch a concert series in her honor. This series will bring an eclectic mix of artists to Calvin with the direct intent of inviting our larger community to experience the beautiful space and welcoming community at Calvin. More details will be made public within the next month. In the meantime, I ask that you mark your calendars for April 21st, and begin talking to others about ways to celebrate Shirley's life in this meaningful way. Thanks, as always, for your support of our music program here at Calvin. ~Mark

**Do you love to sing? The Calvin Chancel Choir is always welcoming new singers! No experience is necessary—only a love for music! There's also no need for a long-term commitment. Join us for one rehearsal and see if you like it. Rehearsals are on Wednesday nights from 7:00-8:30pm in the music room.**



MARCH 2018



SUN	MON	TUE	WED	THU	FRI	SAT
 <p><i>Fellowship Time is on Sundays at 11:00am (following worship)</i></p>				1  3-5pm SPARKS 5:30pm SPARKS dinner	2	3
<b>4 Communion</b>  9am Adult Education  10am Worship/ Sunday school	5  8am Men's breakfast	6  3-5pm SPARKS  6:30pm Session	7  6pm Soup sup- per & Lenten worship  7pm Choir practice	8  2pm Ruth Circle  3-5pm SPARKS	9	10
11  9am Adult Education 9:30am Choir rehearsal 10am Worship/ Sunday school	12	13  3-5pm SPARKS	14  6pm Soup sup- per & Lenten worship  7pm Choir practice	15  3-5pm SPARKS	16	17
18  9am Adult Education 9:30am Choir rehearsal 10am Worship/Sunday school	19	20  3-5pm SPARKS	21  6pm Soup sup- per & Lenten worship  7pm Choir practice	22  3-5pm SPARKS   5:30pm Commu- nity Meal @ St. George	23	24
25   9am Adult Education 9:30am Choir rehearsal 10am Worship/Sunday school 11am Palm Sunday brunch	26	27  No SPARKS	28  9:30am Mary & Martha Circle  7pm Choir practice	29  No SPARKS   7pm Communion worship service	30   7pm Good Friday worship @ Calvin	31

**NOTES:**

**CALVIN  
PRESBYTERIAN  
CHURCH**

177 Glendale Drive  
Long Lake, MN 55356

Phone: 952-473-5419

*calvinchurch.net*

Connect with us!



**OFFICE HOURS**

Monday - Friday  
10:00am - 2:00pm

*Pastor Carol is in  
the office Tues - Fri  
(or can be reached at  
her home phone #)*



Please recycle

**Calvin Connection**

**March 2018**

*We extend a most cordial invitation  
to you to participate in worship,  
study and the many other activities in  
the life of our Calvin family.*



**Church Staff**

Pastor - Rev. Dr. Carol Reed  
Parish Associate - Rev. Dwight Chamberlain  
Pastor Emeritus - Rev. Douglas Potter  
Clerk of Session - Walter Baker  
  
Music Director - Mark Bilyeu  
Handbell Director - Mark Bilyeu  
Choral Accompanist - Taylor Burkhardt  
  
Office Administrator - Angela Cocoluto  
Treasurer - Pat King  
Financial Secretaries - Marj Eisinger & Tammy Wenz  
Custodian -

**Email address contacts:**

Carol Reed                      carol.reed@calvinchurch.net  
Angela Cocoluto              angela@calvinchurch.net

**Calvin Connection deadline:** Second Friday of the month

**Sunday Bulletin announcements deadline:** Thursdays at 10am

*Email articles and/or announcements for the Calvin Connection & Sunday bulletins to Angela  
(see email address above), or drop them off in the church office. Any questions, please call  
Angela at 952-473-5419.*